



RIVERHEAD CHARTER SCHOOL

Source Code: QS5NXGJ

Help earn money for your school...be sure to enter your source code when placing your order online or on the phone.
www.frenchtoast.com 1-800-FRENCHTOAST (1-800-373-6248) fax 1-888-296-4966

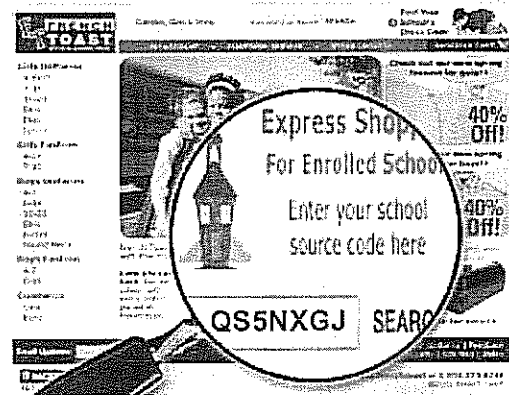
YOU CAN NOW FOLLOW FRENCHTOAST.COM ON FACEBOOK AND TWITTER. BECOME A FAN AND RECEIVE THE LATEST INFORMATION ON NEW PRODUCTS, SALES, AND SPECIAL PROMOTIONS.

<http://www.facebook.com/pages/FrenchToastcom/119383800713>

<http://twitter.com/FrenchToastcom>

Each student is **REQUIRED** to have 1 Polo shirt with Embroidered Logo

Ties are **REQUIRED** when wearing Boys' Dress Shirts



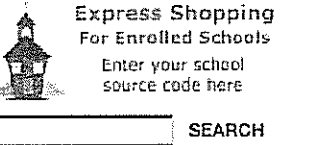


Dress Code

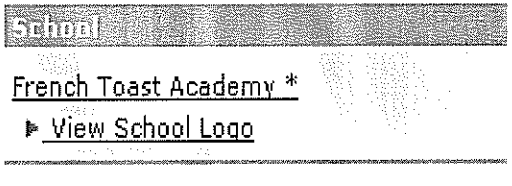
www.frenchtoast.com 1-800-FRENCHTOAST (1-800-373-6248) fax 1-888-296-4966

Your school has provided French Toast with your schools specific dress code. Below are instructions to help you shop by your dress code and is the only way to order embroidered items.

1. There are two ways you can shop by your schools dress code on FrenchToast.com

- a. Click on  and enter in your school information → 
- OR
- b. From our homepage enter in your school's unique source code in "Express Shopping" search box → 

2. On the School Results page, if your school is listed along with a "view school logo" link, your school has provided us with your school logo. There are item(s) in your dress code that can or must be embroidered.

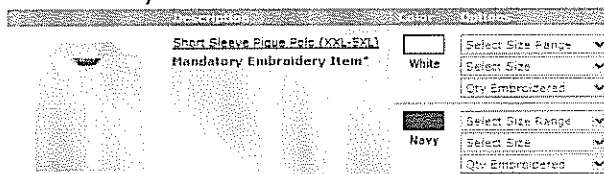
- a. Click on your school's name to view and shop by your school's dress code. → 
- b. Click on the "view School logo" link to view your school's logo and embroidery fee. →

3. Click on the desired dress code from the options

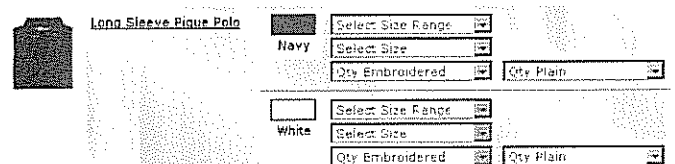
4. Select Size Range, then select Specific Size and add your Quantity.

For Embroidery Items

- a. If your school has a mandatory school logo requirement for some specific items, you will only be able to select those items with embroidery.



- b. If your school does not have a mandatory logo embroidery policy, then you will be presented with the option of ordering those items with or without your schools logo.



5. Once you are done selecting all of your items, click the "Add to Cart button" image.

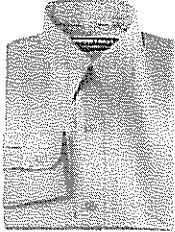


RIVERHEAD CHARTER SCHOOL

Source Code: QS5NXGJ

Help earn money for your school...be sure to enter your source code when placing your order online or on the phone.
www.frenchtoast.com 1-800-FRENCHTOAST (1-800-373-6248) fax 1-888-296-4966

BOYS



Classic dress shirt (long sleeve)

A comfortable dress shirt made from our Wrinkle No More fabric has a front pocket, expandable collar for extra breathing room and round cuffs for that grown up look. Imported. Machine wash. Cotton Polyester Blend.

Approved Color(s): WHIT

| Item # | Size | Price |
|--------|--------------------------------|-------|
| 1014R | Boys Toddler (2T, 3T, 4T) | 8.98 |
| 1014A | Boys (4, 5, 6, 7) | 9.98 |
| 1014F | Boys (8, 10, 12, 14) | 10.98 |
| 1014L | Boys (16, 18, 20) | 11.98 |
| 1014S | Boys Husky (10 thru 20) | 12.98 |
| 1014K | Young Mens (S, M, L, XL, XXL)* | 13.98 |

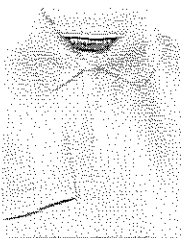


Classic dress shirt (short sleeve)

A comfortable dress shirt made from our Wrinkle No More fabric has a front pocket, expandable collar for extra breathing room and round cuffs for that grown up look. Imported. Machine wash. Cotton Polyester Blend.

Approved Color(s): WHIT

| Item # | Size | Price |
|--------|---------------------------|-------|
| 1021R | Boys Toddler (2T, 3T, 4T) | 7.98 |
| 1021A | Boys (4, 5, 6, 7) | 8.98 |
| 1021F | Boys (8, 10, 12, 14) | 10.98 |
| 1021L | Boys (16, 18, 20) | 10.98 |
| 1021S | Boys Husky (10 thru 20) | 11.98 |
| 1021K | Young Mens (S, M, L, XL) | 12.98 |
| 10219 | Adult (L, XL, 2XL) | 11.98 |



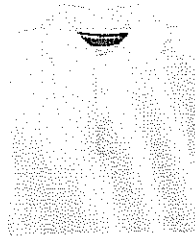
Get It Embroidered!
only \$5.50 per item.

Pique polo shirt with knit collar (long sleeve)

The fashionable and heavy weight pique polo with 3 button placket allows your child to look good and feel great. Imported. Machine wash. Cotton Polyester Blend.

Approved Color(s): WHIT

| Item # | Size | Price |
|--------|---------------------------|-------|
| 1009R | Kids Toddler (2T, 3T, 4T) | 7.98 |
| 1009C | Kids (4, 5, 6, 7) | 8.98 |
| 1009H | Kids (8, 10, 12, 14) | 9.98 |
| 1009P | Kids (16, 18, 20) | 11.98 |
| 1009T | Kids Husky (10 thru 20) | 11.98 |
| 1009W | Teens (S, M, L, XL)* | 13.98 |



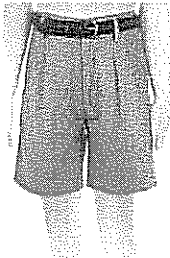
Get It Embroidered!
only \$5.50 per item.

Pique polo shirt with knit collar (short sleeve)

The fashionable and heavy weight pique polo with 3 button placket allows your child to look good and feel great. Imported. Machine wash. Cotton Polyester Blend.

Approved Color(s): WHIT

| Item # | Size | Price |
|--------|----------------------------|-------|
| 1012R | Kids Toddler (2T, 3T, 4T) | 7.98 |
| 1012C | Kids (4, 5, 6, 7) | 8.98 |
| 1012H | Kids (8, 10, 12, 14) | 9.98 |
| 1012P | Kids (16, 18, 20) | 11.98 |
| 1012T | Kids Husky (10 thru 20) | 11.98 |
| 1012W | Teens (S, M, L, XL) | 13.98 |
| 10129 | Adult (2XL, 3XL, 4XL, 5XL) | 15.98 |

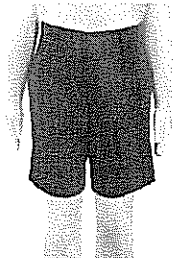


Pleated short

The pleated walk short is a classic school uniform piece. Side seam pockets and a slash pocket on the back right. Imported. Machine wash. Cotton Polyester Blend.

Approved Color(s): NAVY

| Item # | Size | Price |
|--------|-------------------------------|-------|
| 1024A | Boys (4, 5, 6, 7) | 10.98 |
| 1024F | Boys (8, 10, 12, 14) | 11.98 |
| 1024J | Boys Slim(8s, 10s, 12s, 14s)* | 11.98 |
| 1024L | Boys (16, 18, 20) | 12.98 |
| 1024S | Boys Husky(10 thru 20)* | 13.98 |
| 1024K | Young Mens (S, M, L, XL)* | 14.50 |



Flat Front Short

Our classic flat front pant has a new fit feature of an outer adjustable waistband. Cotton/poly. Imported. Machine wash.

Approved Color(s): NAVY

| Item # | Size | Price |
|--------|-------------------------|-------|
| 1308A | (4,5,6,7) | 10.98 |
| 1308F | (8,10,12,14) | 11.98 |
| 1308L | (16,18,20) | 12.98 |
| 1308S | Boys Husky (10 thru 20) | 13.98 |
| 1308K | Young Men (S,M,L, XL) | 15.98 |

Dress Code

www.frenchtoast.com 1-800-FRENCHTOAST (1-800-373-6248) fax 1-888-296-4966



RIVERHEAD CHARTER SCHOOL

Source Code: QS5NXGJ

Help earn money for your school...be sure to enter your source code when placing your order online or on the phone.
www.frenchtoast.com 1-800-FRENCHTOAST (1-800-373-6248) fax 1-888-296-4966

BOYS

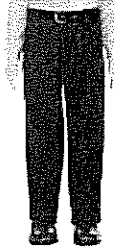


Flat Front Adjustable Waist Short-New!

This cotton blend twill short falls to just above the knee. It features front pockets, a single back pocket, and hook-and-eye closure perfect for school. Cotton twill.

Approved Color(s): NAVY

| Item # | Size | Price |
|--------|-------------------------------------|-------|
| 1431A | Boys (4, 5, 6, 7) | 11.98 |
| 1431F | Boys (8, 10, 12, 14) | 12.98 |
| 1431L | Boys (16, 18, 20) | 13.98 |
| 1431S | Boys Husky (10 thru 20) | 14.98 |
| 1431Y | Young Mens (31, 32, 33, 34, 36, 38) | 15.98 |
| 1431K | Young Mens (S, M, L, XL) | 15.98 |



Adjustable Waist Pleated Double-Knee Pant-New!

An expandable elastic inner waist tab and a sfter finish makes this pleated front version of our famous double-knee pant extra special. Cotton blend with Wrinkle No More fabric. Imported. Machine wash.

Approved Color(s): NAVY

| Item # | Size | Price |
|--------|-------------------------|-------|
| 1432A | Boys (4, 5, 6, 7) | 14.98 |
| 1432F | Boys (8, 10, 12, 14) | 16.98 |
| 1432L | Boys (16, 18, 20) | 18.98 |
| 1432S | Boys Husky (10 thru 20) | 19.98 |



Boys Adjustable Waist Double-Knee Pant

Our classic flat front double knee pant has a new feature--a hidden adjustable waistband. Cotton/polyester blend. Imported.

Approved Color(s): NAVY

| Item # | Size | Price |
|--------|-------------------------------|-------|
| 1319A | Boys (4, 5, 6, 7) | 14.98 |
| 1319D | Boys Slim(4s, 5s, 6s, 7s) | 14.98 |
| 1319F | Boys (8, 10, 12, 14) | 16.98 |
| 1319J | Boys Slim (8s, 10s, 12s, 14s) | 16.98 |
| 1319L | Boys (16, 18, 20) | 19.98 |
| 1319S | Boys Husky (10 thru 20) | 21.98 |



Flat Front All Season Pant

This flat front classic has clean lines in a slightly heavier fabric. Closed with hook-and-eye closure and zip front, it also has an elastic waist. Polyester/rayon. Imported. Machine wash.

Approved Color(s): Navy

| Item # | Size | Price |
|--------|-------------------------|-------|
| 1396A | Boys (4, 5, 6, 7) | 12.98 |
| 1396F | Boys (8, 10, 12, 14) | 14.98 |
| 1396L | Boys (16, 18, 20) | 16.98 |
| 1396S | Boys Husky (10 thru 20) | 17.98 |



Pleated Adjustable Waist Short-New!

Our cool, comfortable pleated short has side seam pockets and a wallet pocket on the back right. Hook-and-Eye closure. Cotton/polyester blend. Imported. Machine wash.

Approved Color(s): NAVY

| Item # | Size | Price |
|--------|--------------------------------------|-------|
| 1430A | Boys (4, 5, 6, 7) | 11.98 |
| 1430F | Boys (8, 10, 12, 14) | 12.98 |
| 1430L | Boys (16, 18, 20) | 13.98 |
| 1430S | Boys Husky (10 thru 20) | 14.98 |
| 1430Y | Young Mens (31, 32, 33, 34, 36, 38)* | 15.98 |
| 1430K | Young Mens (S, M, L, XL) | 15.98 |



Double-knee pant

Flat front double knee pant. Special heat sealing and side seam stitching procedures ensure long lasting durability. On seam pockets and a double welt pocket on the back. Hook and Eye closure. Two inch hem. Imported. Machine wash. Cotton Polyester Blend.

Approved Color(s): NAVY

| Item # | Size | Price |
|--------|------------------------------------|-------|
| 1004A | Boys (4, 5, 6, 7) | 14.98 |
| 1004D | Boys Slim(4s, 5s, 6s, 7s)* | 14.98 |
| 1004F | Boys (8, 10, 12, 14) | 16.98 |
| 1004J | Boys Slim (8s, 10s, 12s, 14s)* | 16.98 |
| 1004L | Boys (16, 18, 20) | 17.98 |
| 1004S | Boys Husky (10 thru 20) | 19.98 |
| 1004V | Boys Husky WAIST SIZE(26, 38, 40)* | 21.98 |

Dress Code

www.frenchtoast.com 1-800-FRENCHTOAST (1-800-373-6248) fax 1-888-296-4966



RIVERHEAD CHARTER SCHOOL

Source Code: QS5NXGJ

Help earn money for your school...be sure to enter your source code when placing your order online or on the phone.
www.frenchtoast.com 1-800-FRENCHTOAST (1-800-373-6248) fax 1-888-296-4966

BOYS

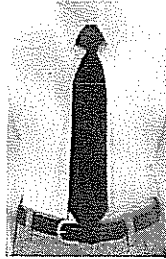


Pleated double-knee pant

The pleated double knee pant is what separates us from the rest. Special heat sealing and side seam stitching procedures ensure long lasting durability. On seam pockets and a double welt pocket on the back. Hook and Eye closure. Two inch hem. Imported. Machine wash.

Approved Color(s): NAVY

| Item # | Size | Price |
|--------|----------------------|-------|
| 1005A | Boys (4, 5, 6, 7) | 14.50 |
| 1005F | Boys (8, 10, 12, 14) | 16.98 |
| 1005L | Boys (16, 18, 20) | 18.98 |
| 1005S | Boys Husky (10-20) | 19.98 |

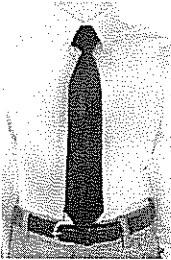


Adjustable Solid Color Tie

The adjustable tie with velcro closure is easy to wear and perfectly suitable to save because it's sure to fit for years and years. Imported. Machine wash.

Approved Color(s): NAVY

| Item # | Size | Price |
|--------|-----------------------|-------|
| 10311 | Boys (4-7) One Size | 4.50 |
| 10312 | Boys (8-12) One Size | 4.50 |
| 10313 | Boys (14-20) One Size | 4.50 |



Boys solid ties - full make

The full make tie is the real thing. It's pretty simple if you know how to handle it, but comes with a complete set of directions, just in case. Durable and easy care. Imported. Machine Wash.

Approved Color(s): NAVY

| Item # | Size | Price |
|--------|-----------------------|-------|
| 11323 | Boys (14-20) One Size | 4.50 |

Dress Code

www.frenchtoast.com 1-800-FRENCHTOAST (1-800-373-6248) fax 1-888-296-4966

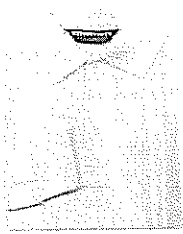



RIVERHEAD CHARTER SCHOOL

Source Code: QS5NXGJ

Help earn money for your school...be sure to enter your source code when placing your order online or on the phone.
www.frenchtoast.com 1-800-FRENCHTOAST (1-800-373-6248) fax 1-888-296-4966

GIRLS



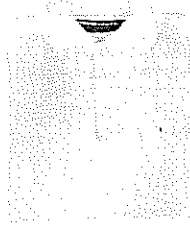
 **Get It Embroidered!**
only \$5.50 per item.


Pique polo shirt with knit collar (long sleeve)

The fashionable and heavy weight pique polo with 3 button placket allows your child to look good and feel great. Imported. Machine wash. Cotton Polyester Blend.

Approved Color(s): WHIT

| Item # | Size | Price |
|--------|---------------------------|-------|
| 1009R | Kids Toddler (2T, 3T, 4T) | 7.98 |
| 1009C | Kids (4, 5, 6, 7) | 8.98 |
| 1009H | Kids (8, 10, 12, 14) | 9.98 |
| 1009P | Kids (16, 18, 20) | 11.98 |
| 1009T | Kids Husky (10 thru 20) | 11.98 |
| 1009W | Teens (S, M, L, XL)* | 13.98 |



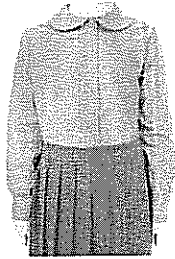
 **Get It Embroidered!**
only \$5.50 per item.

Pique polo shirt with knit collar (short sleeve)

The fashionable and heavy weight pique polo with 3 button placket allows your child to look good and feel great. Imported. Machine wash. Cotton Polyester Blend.

Approved Color(s): WHIT

| Item # | Size | Price |
|--------|----------------------------|-------|
| 1012R | Kids Toddler (2T, 3T, 4T) | 7.98 |
| 1012C | Kids (4, 5, 6, 7) | 8.98 |
| 1012H | Kids (8, 10, 12, 14) | 9.98 |
| 1012P | Kids (16, 18, 20) | 11.98 |
| 1012T | Kids Husky (10 thru 20) | 11.98 |
| 1012W | Teens (S, M, L, XL) | 13.98 |
| 10129 | Adult (2XL, 3XL, 4XL, 5XL) | 15.98 |

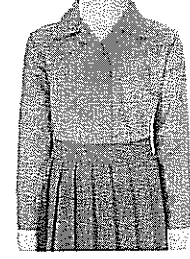


Peter pan blouse (long sleeve)

The peter pan collar blouse is a real classic. Wrinkle No More fabric and a center placket. Imported. Machine Wash. Cotton/Polyester blend.

Approved Color(s): WHIT

| Item # | Size | Price |
|--------|------------------------------------|-------|
| 1034Q | Girls Toddler (2T, 3T, 4T) | 6.50 |
| 1034B | Girls (4, 5, 6, 6X) | 7.98 |
| 1034G | Girls (7, 8, 10, 12, 14) | 8.98 |
| 1034N | Girls (16, 18, 20) | 9.98 |
| 1034U | Girls Plus (10 1/2 thru 20 1/2) | 10.98 |
| 1034E | Girls Plus (chest size 42 thru 46) | 10.98 |

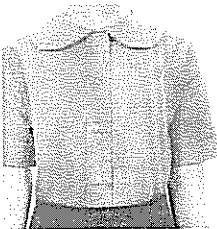


Pointy Collar Blouse - Long Sleeve

The blouse that allows versatility. A pointy collar blouse when open and a convertible blouse when closed. Wrinkle No More fabric. Imported. Machine wash. Cotton/Polyester Poplin.

Approved Color(s): WHIT

| Item # | Size | Price |
|--------|---------------------------------|-------|
| 1036B | Girls(4, 5, 6, 6X) | 6.98 |
| 1036G | Girls (7, 8, 10, 12, 14) | 7.98 |
| 1036N | Girls (16, 18, 20) | 8.98 |
| 1036U | Girls Plus (10 1/2 thru 20 1/2) | 9.98 |
| 1036E | Extended Plus 42.5, 44.5, 46.5 | 9.98 |
| 1036X | JUNIORS (S, M, L, XL) | 10.50 |

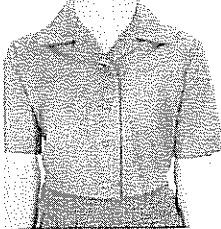


Peter pan blouse (short sleeve)

The peter pan collar blouse is a real classic. Wrinkle No More fabric and a center placket. Imported. Machine Wash. Cotton/Polyester blend.

Approved Color(s): WHIT

| Item # | Size | Price |
|--------|------------------------------------|-------|
| 1040Q | Girls Toddler(2T, 3T, 4T) | 5.50 |
| 1040B | Girls (4, 5, 6, 6X) | 6.98 |
| 1040G | Girls (7, 8, 10, 12, 14) | 7.98 |
| 1040N | Girls (16,18,20) | 8.98 |
| 1040U | Girls Plus (10 1/2 thru 20 1/2) | 9.98 |
| 1040E | Girls Plus (chest size 42 thru 46) | 9.98 |



Pointy Collar Blouse - Short Sleeve

The blouse that allows versatility. A pointy collar blouse when open and a convertible blouse when closed. Wrinkle No More fabric. Imported. Machine wash. Cotton Polyester Blend.

Approved Color(s): WHIT

| Item # | Size | Price |
|--------|-------------------------------|-------|
| 1042B | 4, 5, 6, 6X | 5.98 |
| 1042G | 7, 8, 10, 12, 14* | 7.50 |
| 1042N | 16, 18, 20 | 8.50 |
| 1042U | PLUS 10 1/2 THRU 20 1/2* | 9.50 |
| 1042E | Plus Chest Sizes (42, 44, 46) | 9.50 |
| 1042X | Junior (S, M, L, XL) | 9.98 |

Dress Code

www.frenchtoast.com 1-800-FRENCHTOAST (1-800-373-6248) fax 1-888-296-4966



RIVERHEAD CHARTER SCHOOL

Source Code: QS5NXGJ

Help earn money for your school...be sure to enter your source code when placing your order online or on the phone.
www.frenchtoast.com 1-800-FRENCHTOAST (1-800-373-6248) fax 1-888-296-4966

GIRLS



L/S Trim-Fit Peter Pan Blouse-New Modified Fit

Approved Color(s): WHT

| Item # | Size | Price |
|--------|---------------------------------|-------|
| 1460B | Girls (4, 5, 6, 6X) | 8.98 |
| 1460G | Girls (7, 8, 10, 12, 14) | 9.98 |
| 1460N | Girls (16, 18, 20) | 10.98 |
| 1460Q* | Girls Toddler (2T, 3T, 4T) | 6.98 |
| 1460U | Girls Plus (10 1/2 thru 20 1/2) | 11.98 |
| 1460E | Ext. Plus (42.5, 44.5, 46.5) | 11.98 |



S/S Trim-Fit Peter Pan Blouse-New Modified Fit

Approved Color(s): WHT

| Item # | Size | Price |
|--------|---------------------------------|-------|
| 1461Q | Girls Toddler (2T, 3T, 4T) | 5.98 |
| 1461B | Girls (4, 5, 6, 6X) | 7.98 |
| 1461G | Girls (7, 8, 10, 12, 14) | 8.98 |
| 1461N | Girls (16, 18, 20) | 9.98 |
| 1461U | Girls Plus (10 1/2 thru 20 1/2) | 10.98 |
| 1461E | Ext. Plus (42.5, 44.5, 46.5) | 10.98 |



L/S Trim-Fit Pointy Collar Blouse-New Modified Fit

Approved Color(s): WHIT

| Item # | Size | Price |
|--------|---------------------------------|-------|
| 1464B | Girls (4, 5, 6, 6X) | 7.98 |
| 1464G | Girls (7, 8, 10, 12, 14) | 8.98 |
| 1464N | Girls (16, 18, 20) | 9.98 |
| 1464U | Girls Plus (10 1/2 thru 20 1/2) | 10.98 |
| 1464E | Ext. Plus (42.5, 44.5, 46.5) | 10.98 |



S/S Trim-Fit Pointy Collar Blouse-New Modified Fit

Approved Color(s): WHIT

| Item # | Size | Price |
|--------|---------------------------------|-------|
| 1465B | Girls (4, 5, 6, 6X) | 6.98 |
| 1465G | Girls (7, 8, 10, 12, 14) | 7.98 |
| 1465N | Girls (16, 18, 20) | 8.98 |
| 1465U | Girls Plus (10 1/2 thru 20 1/2) | 9.98 |
| 1465E | Ext. Plus (42.5, 44.5, 46.5) | 9.98 |



Kick Pleat Scooter

For girls who want to stay active without sacrificing style, this innovative combination of skirt and shorts is the perfect solution. Comfortable jersey sport shorts are hidden under a skirt with flattering double kick pleats. Half elastic waistband. Poly/Spandex. Imported.

Approved Color(s): NAVY

| Item # | Size | Price |
|--------|-----------------------------------|-------|
| 1286Q | Girls Toddler (2T, 3T, 4T) | 9.98 |
| 1286B | Girls (4, 5, 6, 6X) | 10.98 |
| 1286G | Girls (7, 8, 10, 12, 14) | 11.98 |
| 1286N | Girls (16, 18, 20) | 13.98 |
| 1286U | Girls Plus (10 1/2 thru 20 1/2) | 14.98 |
| 1286X | Girls Juniors(3, 5, 7, 9, 11, 13) | 15.98 |



Two-Tab Scooter

This pleated scooter with hidden sport shorts has two buckle tabs at the top for subtle detail. 100% polyester. Imported. Machine wash.

Approved Color(s): NAVY

| Item # | Size | Price |
|--------|-----------------------------------|-------|
| 1302Q | Girls Toddler (2T, 3T, 4T) | 7.98 |
| 1302B | Girls (4,5,6,6X) | 9.98 |
| 1302G | Girls (7,8,10,12,14) | 10.98 |
| 1302N | Girls (16,18,20) | 11.98 |
| 1302U | Girls Plus (10 1/2 thru 20 1/2) | 13.98 |
| 1302X | Girls Juniors(3, 5, 7, 9, 11, 13) | 13.98 |
| 1302E | Girls Extended Plus (38,40,42)* | 13.98 |
| 13029 | Young Women (10 thru 20) | 14.98 |

Dress Code

www.frenchtoast.com 1-800-FRENCHTOAST (1-800-373-6248) fax 1-888-296-4966



RIVERHEAD CHARTER SCHOOL

Source Code: QS5NXGJ

Help earn money for your school...be sure to enter your source code when placing your order online or on the phone.
www.frenchtoast.com 1-800-FRENCHTOAST (1-800-373-6248) fax 1-888-296-4966

GIRLS



Pleated skirt

The pleated skirt is absolutely timeless with its classic cut, classic spirit and real school style. Permanent pleats and side zipper and one button closure. Imported. Machine wash. 100% Polyester.

Approved Color(s): NAVY

| Item # | Size | Price |
|--------|-----------------------------------|-------|
| 1066B | Girls (4, 5, 6, 6x) | 9.98 |
| 1066G | Girls (7, 8, 10, 12, 14) | 10.98 |
| 1066N | Girls (16, 18, 20) | 11.98 |
| 1066U | Girls Plus (10 1/2 thru 20 1/2) | 12.98 |
| 1066X | Girls Junior (3, 5, 7, 9, 11, 13) | 13.50 |

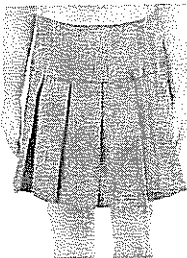


Kick pleat skirt

With its chic look and knee length, this skirt makes a modest but hip impression. Kick pleat front, tab closure, polyester. Imported. Machine wash.

Approved Color(s): NAVY

| Item # | Size | Price |
|--------|---------------------------------|-------|
| 1268B | Girls (4,5,6,6X) | 9.98 |
| 1268G | Girls (7,8,10,12,14) | 10.98 |
| 1268N | Girls (16,18,20) | 11.98 |
| 1268U | Girls Plus (10 1/2 thru 20 1/2) | 12.98 |
| 1268E | Girls Extended Plus (38,40,42)* | 13.50 |
| 1268X | Girls Juniors (3,5,7,9,11,13) | 13.50 |
| 12689 | Young Women (10 thru 20) | 13.98 |



Pleated Scooter with Grosgrain Ribbon

This adorable little twill scooter has a precious grosgrain ribbon trim bow detail. Outer skirt is Cotton/polyester. Inner hidden comfort short 100% polyester. Imported. Machine wash.

Approved Color(s): NAVY

| Item # | Size | Price |
|--------|--------------------------|-------|
| 1338Q | Toddler (2T, 3T, 4T) | 7.98 |
| 1338B | Girls (4, 5, 6, 6X) | 8.98 |
| 1338G | Girls (7, 8, 10, 12, 14) | 9.98 |
| 1338N | Girls (16, 18, 20) | 11.98 |

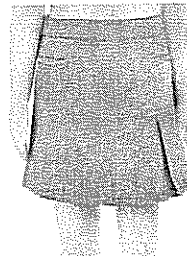


Three Tab Pleated Skort

The three tab pleated skort has a lot going for it. It has three non-functioning buttons on the front, four wide pleats and a zipper on the side for comfort and ease. Imported. Machine wash. 100% Polyester.

Approved Color(s): NAVY

| Item # | Size | Price |
|--------|-----------------------------------|-------|
| 1070B | Girls (4, 5, 6, 6x) | 10.50 |
| 1070G | Girls (7, 8, 10, 12, 14) | 10.98 |
| 1070N | Girls (16, 18, 20) | 11.98 |
| 1070U | Girls Plus (10 1/2 thru 20 1/2) | 12.50 |
| 1070X | Girls Junior (3, 5, 7, 9, 11, 13) | 13.50 |



Side Pleated Scooter

This stylish scooter has pleats on one side and flat welt pockets in front. Outer skirt is Cotton/polyester. Inner hidden comfort short 100% polyester.

Imported. Machine Wash

Approved Color(s): NAVY

| Item # | Size | Price |
|--------|------------------------------------|-------|
| 1337B | Girls (4, 5, 6, 6X) | 10.98 |
| 1337G | Girls (7, 8, 10, 12, 14) | 11.98 |
| 1337N | Girls (16, 18, 20) | 13.98 |
| 1337U | Girls Plus (10 1/2 thru 20 1/2) | 14.98 |
| 1337X | Girls Juniors (3, 5, 7, 9, 11, 13) | 15.98 |



Pleated short

The short has it all, double front pleats, a fake coin pocket and roll up leg cuffs tacked down at the seam. Imported. Machine wash. Cotton Polyester Blend.

Approved Color(s): NAVY

| Item # | Size | Price |
|--------|---------------------------------|-------|
| 1062B | Girls (4, 5, 6, 6x) | 10.98 |
| 1062G | Girls (7, 8, 10, 12, 14) | 11.98 |
| 1062N | Girls (16, 18, 20) | 13.98 |
| 1062U | Girls Plus (10 1/2 thru 20 1/2) | 13.98 |
| 1062X | Girls Juniors (3,5,7,9,11,13) | 14.98 |

Dress Code

www.frenchtoast.com 1-800-FRENCHTOAST (1-800-373-6248) fax 1-888-296-4966

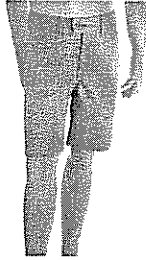


RIVERHEAD CHARTER SCHOOL

Source Code: QS5NXGJ

Help earn money for your school...be sure to enter your source code when placing your order online or on the phone.
www.frenchtoast.com 1-800-FRENCHTOAST (1-800-373-6248) fax 1-888-296-4966

GIRLS

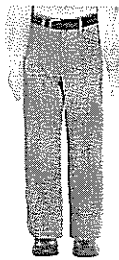


Bermuda Short

This new stretch twill bermuda short gives girls another option with its knee length style. The flattering cut will make the hot back-to-school days cool! Cotton/spandex. Imported. Machine wash.

Approved Color(s): NAVY

| Item # | Size | Price |
|--------|---------------------------------|-------|
| 1303B | Girls (4,5,6,6X) | 11.98 |
| 1303G | Girls (7,8,10,12,14) | 12.98 |
| 1303N | Girls (16,18,20) | 13.98 |
| 1303U | Girls Plus (10 1/2 thru 20 1/2) | 14.98 |
| 1303X | Girls Juniors (3,5,7,9,11,13) | 15.98 |
| 13039 | Young Women (10 thru 20) | 15.98 |



Girls Adjustable Waist Pant

Sure to become a favorite, this fashionably styled basic twill pant features an adjustable drop waist and trendy bootleg cut. Cotton/polyester. Imported. Machine Wash

Approved Color(s): NAVY

| Item # | Size | Price |
|--------|------------------------------------|-------|
| 1315B | Girls (4, 5, 6, 6X) | 12.98 |
| 13157 | Girls Slim(4s, 5s, 6s, 6xs) | 12.98 |
| 1315G | Girls (7, 8, 9, 10, 12, 14) | 14.98 |
| 13158 | Girls Slim (7s, 8s, 10s, 12s, 14s) | 14.98 |
| 1315N | Girls (16, 18, 20) | 16.98 |
| 1315U | Girls Plus (10 1/2 thru 20 1/2) | 18.98 |
| 1315X | Girls Juniors (3, 5, 7, 9, 11, 13) | 19.98 |



Flat front all season pant

The pant girls have been waiting for - comfortable and flattering! Made of soft poly-rayon blend, these flat front pants are sure to be a winner every season. Imported. Machine wash.

Approved Color(s): NAVY

| Item # | Size | Price |
|--------|---------------------------------|-------|
| 1273B | Girls (4,5,6,6X) | 12.98 |
| 1273G | Girls (7,8,10,12,14) | 13.98 |
| 1273B | Girls Slim (7s,8s,10s,12s,14s) | 13.98 |
| 1273N | Girls (16,18,20) | 15.98 |
| 1273U | Girls Plus (10 1/2 thru 20 1/2) | 16.98 |
| 1273X | Girls Juniors (3,5,7,9,11,13) | 17.98 |



Two pleat front jumper

Classic silhouette recreated with button accent and two front pleats for extra comfort. Side zipper closure. Polyester. Imported. Machine wash.

Approved Color(s): NAVY

| Item # | Size | Price |
|--------|--------------------------|-------|
| 1275B | Girls (4, 5, 6, 6x) | 9.98 |
| 1275G | Girls (7, 8, 10, 12, 14) | 10.98 |
| 1275N | Girls (16, 18, 20) | 11.98 |



Twin Buckle Tab Jumper

Our new comfortable jumper adds style and flair to a classic design with its double self-fabric belt, antique brass buckles and hidden zipper side closure.

Poly/cotton twill. Imported. Machine wash.

Approved Color(s): NAVY

| Item # | Size | Price |
|--------|--------------------------|-------|
| 1285B | Girls (4, 5, 6, 6x) | 10.98 |
| 1285G | Girls (7, 8, 10, 12, 14) | 12.98 |
| 1285N | Girls (16, 18, 20) | 14.98 |

Dress Code

www.frenchtoast.com 1-800-FRENCHTOAST (1-800-373-6248) fax 1-888-296-4966



RIVERHEAD CHARTER SCHOOL

Source Code: QS5NXGJ

Help earn money for your school...be sure to enter your source code when placing your order online or on the phone.
www.frenchtoast.com 1-800-FRENCHTOAST (1-800-373-6248) fax 1-888-296-4966

BOYS



Get It Embroidered!
 only \$5.50 per item.

Pullover Sweater

This is a sporty and warm addition to any boy's wardrobe. This pullover sweater has taffeta detail at placket, faux leather basket weave buttons and deep kangaroo pockets. Acrylic. Imported. Machine wash.

Approved Color(s): NAVY

| Item # | Size | Price |
|--------|-------------------------|-------|
| 1360A | Boys (4, 5, 6, 7) | 13.98 |
| 1360F | Boys (8, 10, 12, 14) | 15.98 |
| 1360L | Boys (16, 18, 20) | 18.98 |
| 1360K | Young Men (S, M, L, XL) | 20.98 |



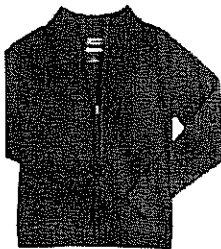
Get It Embroidered!
 only \$5.50 per item.

Anti Pill V-Neck Cardigan

An old classic with modern take, this anti-pill cardigan sports the traditional v-neck, front pockets and button down front, make this sweater a fantastic value. Acrylic. Imported. Machine wash.

Approved Color(s): NAVY

| Item # | Size | Price |
|--------|---------------------------|-------|
| 1370R | Boys Toddler (2T, 3T, 4T) | 15.98 |
| 1370A | Boys (4, 5, 6, 7) | 16.98 |
| 1370F | Boys (8, 10, 12, 14) | 18.98 |
| 1370L | Boys (16, 18, 20) | 21.98 |
| 1370S | HUSKY 10 THRU 20 | 23.98 |
| 1370K | Young Mens (S, M, L, XL) | 25.98 |



Zipper Front Sweater-New!

This is our most versatile sweater-designed to be worn as a layering piece or on its own in place of a jacket. Easy on/off full front zipper, ribbed mock neck, cuffs and bottom. Cotton/spandex blend. Imported. Machine wash.

Approved Color(s): NAVY

| Item # | Size | Price |
|--------|--------------------------|-------|
| 1426A | Boys (4, 5, 6, 7) | 18.98 |
| 1426F | Boys (8, 10, 12, 14) | 19.98 |
| 1426L | Boys (16, 18, 20) | 20.98 |
| 1426S | Boys Husky (10 thru 20) | 21.98 |
| 1426K | Young Mens (S, M, L, XL) | 22.98 |



Get It Embroidered!
 only \$5.50 per item.

V-Neck Long Sleeve Pull Over Sweater

The pullover v-neck sweater comes with classic styling allows for a great layering system and roomy fit. Imported. Machine wash. 100% Acrylic.

Approved Color(s): NAVY

| Item # | Size | Price |
|--------|----------------------|-------|
| 1028A | Boys (4, 5, 6, 7) | 13.98 |
| 1028F | Boys (8, 10, 12, 14) | 14.98 |
| 1028L | Boys (16, 18, 20) | 15.98 |



Get It Embroidered!
 only \$5.50 per item.

V-neck sweater vest

The ribbed sweater vest is a great addition to any student's wardrobe. Easy care and roomy fit allow one to mix and match. Imported. Machine wash. 100% Acrylic.

Approved Color(s): NAVY

| Item # | Size | Price |
|--------|-------------------------|-------|
| 1029C | Kids (4, 5, 6, 7) | 11.98 |
| 1029H | Kids (7, 8, 10, 12, 14) | 12.98 |
| 1029P | Kids (16, 18, 20) | 13.98 |
| 1029T | HUSKY 10 THRU 20 | 14.98 |
| 1029W | Teens (S, M, L, XL)* | 15.98 |



Get It Embroidered!
 only \$5.50 per item.

Lined Jacket

Our hooded fleece lined jacket keeps kids warm during the slightly cooler months. Front zipper, two front and one sleeve pocket. 100% polyester. Imported. Machine wash.

Approved Color(s): NAVY

| Item # | Size | Price |
|--------|----------------------|-------|
| 1321C | Kids (4, 5, 6, 7) | 17.98 |
| 1321H | Kids (8, 10, 12, 14) | 19.98 |
| 1321P | Kids (16, 18, 20) | 21.98 |

OPTIONAL DRESS CODE ITEMS

www.frenchtoast.com 1-800-FRENCHTOAST (1-800-373-6248) fax 1-888-296-4966




RIVERHEAD CHARTER SCHOOL

Source Code: QS5NXGJ

Help earn money for your school...be sure to enter your source code when placing your order online or on the phone.
www.frenchtoast.com 1-800-FRENCHTOAST (1-800-373-6248) fax 1-888-296-4966

BOYS



 Get It Embroidered!
only \$5.50 per item.

School Blazer

School Blazer

Approved Color(s): NAVY

| Item # | Size | Price |
|--------|--------------------------|-------|
| 1428A | Kids (4, 5, 6, 7) | 28.98 |
| 1428F | Kids (8, 10, 12, 14) | 31.98 |
| 1428L | Kids (16, 18, 20) | 36.98 |
| 1428S | HUSKY 10 THRU 20 | 38.98 |
| 1428K | Young Mens (S, M, L, XL) | 40.98 |

OPTIONAL DRESS CODE ITEMS

www.frenchtoast.com 1-800-FRENCHTOAST (1-800-373-6248) fax 1-888-296-4966



RIVERHEAD CHARTER SCHOOL

Source Code: QS5NXGJ

Help earn money for your school...be sure to enter your source code when placing your order online or on the phone.
www.frenchtoast.com 1-800-FRENCHTOAST (1-800-373-6248) fax 1-888-296-4966

GIRLS



Get It Embroidered!
only \$5.50 per item.

V-neck sweater vest

The ribbed sweater vest is a great addition to any student's wardrobe. Easy care and roomy fit allow one to mix and match. Imported. Machine wash. 100% Acrylic.

Approved Color(s): NAVY

| Item # | Size | Price |
|--------|-------------------------|-------|
| 1029C | Kids (4, 5, 6, 7) | 11.98 |
| 1029H | Kids (7, 8, 10, 12, 14) | 12.98 |
| 1029P | Kids (16, 18, 20) | 13.98 |
| 1029T | HUSKY 10 THRU 20 | 14.98 |
| 1029W | Teens (S, M, L, XL)* | 15.98 |



Get It Embroidered!
only \$5.50 per item.

Fine gauge knit cardigan sweater

The sweater has a soft cashmere-like feel that girls just love. Center front placket (right over left) with matching buttons. Imported. Machine wash. 100% Acrylic.

Approved Color(s): NAVY

| Item # | Size | Price |
|--------|------------------------|-------|
| 1120B | Girls (4,5,6,6X) | 12.98 |
| 1120G | Girls (7,8,10,12,14) | 13.98 |
| 1120N | Girls (16,18,20) | 17.98 |
| 1120X | Girls Juniors (S,M,L)* | 19.98 |



Get It Embroidered!
only \$5.50 per item.

Anti Pill Crew Neck Cardigan Sweater

A true traditional crew neck cardigan with dyed-to-match button closure and front pockets. Special anti-pilling qualities keep it looking great throughout the entire school year. Acrylic. Imported. Machine wash.

Approved Color(s): NAVY

| Item # | Size | Price |
|--------|---------------------------------|-------|
| 1371Q | Girls Toddler (2T, 3T, 4T) | 15.98 |
| 1371B | Girls (4,5,6,6X) | 16.98 |
| 1371G | Girls (7,8,10,12,14) | 18.98 |
| 1371N | Girls (16,18,20) | 21.98 |
| 1371U | Girls Plus (10 1/2 thru 20 1/2) | 23.98 |



Three-Button Cuff Blazer

This very trendy twill blazer has triple button details at the sleeve, cuff, front flap pockets, and double darts in the front and back for an extra flattering fit. Cotton/polyester. Imported. Machine wash.

Approved Color(s): NAVY

| Item # | Size | Price |
|--------|------------------|-------|
| 1412B | 4, 5, 6, 6X | 13.98 |
| 1412G | 7, 8, 10, 12, 14 | 15.98 |
| 1412N | 16, 18, 20 | 17.98 |



Get It Embroidered!
only \$5.50 per item.

Fall Nylon Jacket

Bundle up and stay warm and cozy during cool months in our new zipper front nylon hooded jacket with pockets. A detachable split zipper hood provides added detail and comfort. Imported. Machine wash.

Approved Color(s): NAVY

| Item # | Size | Price |
|--------|--------------------------|-------|
| 1283B | Girls (4, 5, 6, 6X) | 18.98 |
| 1283G | Girls (7, 8, 10, 12, 14) | 19.98 |



Get It Embroidered!
only \$5.50 per item.

Detachable Hood Windbreaker

This sporty jacket has feminine touches of a rounded collar, princess seaming and gathered snap pockets. The detachable hood is there when you need it! Contrast color lining, snap cuffs, front zip. Poly taffeta. Imported. Machine wash.

Approved Color(s): NAVY

| Item # | Size | Price |
|--------|----------------------|-------|
| 1322B | Girls (4,5,6,6X) | 16.98 |
| 1322G | Girls (7,8,10,12,14) | 17.98 |
| 1322N | Girls (16,18,20) | 19.98 |

OPTIONAL DRESS CODE ITEMS

www.frenchtoast.com 1-800-FRENCHTOAST (1-800-373-6248) fax 1-888-296-4966



RIVERHEAD CHARTER SCHOOL

Source Code: QS5NXGJ

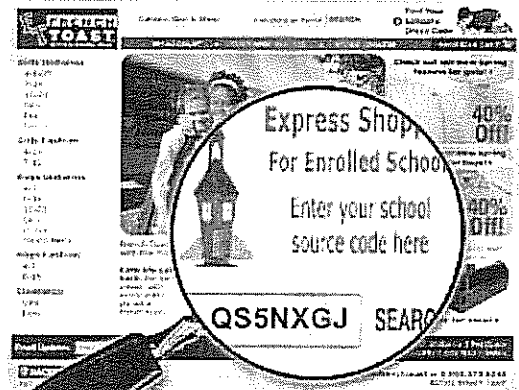
Help earn money for your school...be sure to enter your source code when placing your order online or on the phone.
www.frenchtoast.com 1-800-FRENCHTOAST (1-800-373-6248) fax 1-888-296-4966

YOU CAN NOW FOLLOW FRENCHTOAST.COM ON FACEBOOK AND TWITTER. BECOME A FAN AND RECEIVE THE LATEST INFORMATION ON NEW PRODUCTS, SALES, AND SPECIAL PROMOTIONS.

<http://www.facebook.com/pages/FrenchToastcom/119383800713>

<http://twitter.com/FrenchToastcom>

These items are OPTIONAL for purchase but are REQUIRED to have the logo embroidered on them



OPTIONAL DRESS CODE ITEMS

www.frenchtoast.com 1-800-FRENCHTOAST (1-800-373-6248) fax 1-888-296-4966



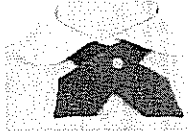
RIVERHEAD CHARTER SCHOOL

Source Code: QS5NXGJ

Help earn money for your school...be sure to enter your source code when placing your order online or on the phone.
www.frenchtoast.com 1-800-FRENCHTOAST (1-800-373-6248) fax 1-888-296-4966

GIRLS

Girls adjustable solid cross ties



The adjustable cross tie is simple to snap with its fabric neck strap and adjustable buckle. Imported. Machine wash. 100% Polyester.

Approved Color(s): NAVY

| Item # | Size | Price |
|--------|----------------|-------|
| 10744 | Girls One Size | 3.50 |

OPTIONAL DRESS CODE ITEMS

www.frenchtoast.com 1-800-FRENCHTOAST (1-800-373-6248) fax 1-888-296-4966

French Toast® Fit Guide

We are here to help! If you need assistance finding the correct size, just call 1-800-FRENCHTOAST. Use the measuring instructions below along with these fitting charts. If your child is between sizes, it's best to select the larger size.

BOYS Unit: Inches

| age | Toddler | 3-4 | 4-5 | 5-6 | 6-7 | 7-8 | 9-10 | 11-12 | 12-13 | 14 & UP | | | | |
|--------------|---------|--------|--------|--------|--------|--------|--------|--------|--------|---------|--------|---------|--------|--------|
| weight (lbs) | 25-28 | 29-32 | 33-36 | 33-37 | 38-42 | 43-48 | 49-57 | 58-67 | 68-77 | 78-87 | 88-97 | 98 & UP | | |
| height | 33-34" | 35-36" | 37-38" | 38-40" | 41-43" | 44-46" | 47-48" | 49-50" | 51-54" | 55-58" | 59-61" | 62-64" | 65-66" | 67-68" |
| chest | 21 | 22 | 23 | 23 | 24 | 25 | 26 | 26½ | 28 | 29½ | 31½ | 33 | 34½ | 36 |
| waist | 20½ | 21 | 21½ | 21½ | 22 | 22½ | 23 | 23½ | 24½ | 25½ | 26½ | 27½ | 28½ | 30 |
| size | 2T | 3T | 4T | 4 | 5 | 6 | 7 | 8 | 10 | 12 | 14 | 16 | 18 | 20 |

BOYS HUSKY Unit: Inches

| age | 9-10 | 11-12 | 12-13 | 14 & UP | | |
|--------|--------|--------|--------|---------|--------|--------|
| height | 51-54" | 55-58" | 59-61" | 62-64" | 65-66" | 67-68" |
| chest | 30 | 32 | 34 | 35 | 36½ | 38 |
| waist | 27 | 28 | 29 | 30½ | 31½ | 32½ |
| size | 10H | 12H | 14H | 16H | 18H | 20H |

BOYS SLIM Unit: Inches

| age | 3-4 | 4-5 | 5-6 | 6-7 | 7-8 | 9-10 | 11-12 | 12-13 | 14 & up |
|--------|--------|--------|--------|--------|--------|--------|--------|--------|---------|
| height | 38-40" | 41-43" | 44-46" | 47-48" | 49-50" | 51-54" | 55-58" | 59-61" | 62-64" |
| chest | 22 | 23 | 24 | 25 | 26 | 27 | 28½ | 30 | 31½ |
| waist | 19½ | 20 | 20½ | 21 | 22 | 23 | 24 | 25 | 26 |
| size | 4S | 5S | 6S | 7S | 8S | 10S | 12S | 14S | 16S |

YOUNG MEN Unit: Inches

| age | 15 & UP | | | | | | | | | |
|------------|-----------|-----------|-----------|------------|-------|--------|--------|--------|-------|-------|
| chest | 31-34" | 35-38" | 39-42" | 43-46" | 50" | 52-54" | 56-58" | 60-62" | | |
| shirt size | S(14-14½) | M(15-15½) | L(16-16½) | XL(17-17½) | 2XL | 3XL | 4XL | 5XL | | |
| waist | 31 | 32 | 33 | 34 | 35-36 | 37-38 | 39-40 | 41-42 | 43-44 | 45-46 |
| size | W31 | W32 | W33 | W34 | W36 | W38 | W40 | W42 | W44 | W46 |

GIRLS REGULAR Unit: Inches

| age | Toddler | 3-4 | 4-5 | 5-6 | 6 | 6-7 | 7-8 | 9-10 | 11-12 | 12-13 | 14 & UP | | | | |
|--------------|---------|--------|--------|--------|--------|--------|--------|--------|--------|--------|---------|--------|-----------|--------|--------|
| weight (lbs) | 25-28 | 29-32 | 33-36 | 33-36 | 37-40 | 41-46 | 47-50 | 51-55 | 56-63 | 64-74 | 75-84 | 85-94 | 95 and up | | |
| height | 33-34" | 35-36" | 37-38" | 36-39" | 40-42" | 43-45" | 46-47" | 48-49" | 50-52" | 53-55" | 56-58" | 59-60" | 61-62" | 63-64" | 65-67" |
| chest | 21 | 22 | 23 | 23 | 24 | 25 | 25½ | 26 | 27 | 28½ | 30 | 31½ | 33 | 34½ | 36 |
| waist | 20½ | 21 | 21½ | 21 | 21½ | 22 | 22½ | 23 | 23½ | 24½ | 25½ | 26½ | 28 | 29 | 30 |
| size | 2T | 3T | 4T | 4 | 5 | 6 | 6x | 7 | 8 | 10 | 12 | 14 | 16 | 18 | 20 |

JUNIORS Unit: Inches

| age | 14 & up | | | | | |
|--------|---------|-----|-----|-----|-----|-----|
| height | 64-67" | | | | | |
| chest | 32 | 33 | 34 | 35½ | 37 | 38½ |
| waist | 24½ | 25½ | 26½ | 28 | 29½ | 31 |
| size | 3 | 5 | 7 | 9 | 11 | 13 |
| size | S | S | M | M | L | L |

GIRLS SLIM Unit: Inches

| age | 3-4 | 4-5 | 5-6 | 6 | 6-7 | 7-8 | 9-10 | 11-12 | 12-13 | 14 & up |
|--------|--------|--------|--------|--------|--------|--------|--------|--------|--------|---------|
| height | 36-39" | 40-42" | 43-45" | 46-47" | 48-49" | 50-52" | 53-55" | 56-58" | 59-60" | 61-62" |
| chest | 22 | 23 | 24 | 25 | 25½ | 26 | 27 | 28½ | 30 | 31½ |
| waist | 19½ | 20 | 20½ | 21 | 21½ | 22 | 23 | 24 | 25 | 26 |
| size | 4S | 5S | 6S | 6x5 | 7S | 8S | 10S | 12S | 14S | 16S |

GIRLS PLUS Unit: Inches

| age | 9-10 | 11-12 | 12-13 | 13-14 | 15 & up | | | | | | | |
|--------|--------|--------|--------|--------|---------|--------|--------------|--------------|-----|-----|----|----|
| height | 53-55" | 56-58" | 59-60" | 61-63" | 64-65" | 65-66" | 5'4" to 5'7" | 5'4" to 5'7" | | | | |
| chest | 31½ | 33 | 34½ | 36 | 37½ | 39 | BOTTOM | 42 | 44 | 46 | | |
| waist | 27½ | 28½ | 29½ | 30½ | 31½ | 32½ | 35½ | 37½ | 39½ | TOP | | |
| size | 10½ | 12½ | 14½ | 16½ | 18½ | 20½ | 38 | 40 | 42 | 42 | 44 | 46 |

YOUNG WOMEN Unit: Inches

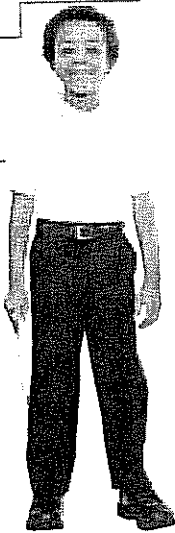
| age | 15 & up | | | | | |
|-------|---------|-----|----|-----|-----|-----|
| waist | 33 | 34½ | 36 | 37½ | 39½ | 41½ |
| size | 10 | 12 | 14 | 16 | 18 | 20 |

Measuring Instructions

Height: Measure your child without shoes, feet together and back to the wall. Place tape measure from the floor to top of head.

Chest: Place the tape measure under your child's arms and around the fullest part of his or her chest. Tape should be comfortably loose.

Waist: Measure your child in his or her underwear. At their natural waistline, place one finger in between the tape and your child's body.



For one-stop shopping for School Uniforms call 1-800-373-6248

Online: www.FrenchToast.com

Phone: 1-800-373-6248

Fax: 1-888-296-4966

Mail: Fill in form and send to:
3003 Scarlett Street, Suite 25
Brunswick, GA 31520

Shipping and handling: Within the continental United States you can expect delivery within 5-7 business days. Orders ship Monday through Friday only. We ship Parcel Post to U.S. P.O. boxes, Hawaii, Alaska, Guam, Puerto Rico and the Virgin Islands. For Puerto Rico, all taxes are the responsibility of the customer. All catalog prices and shipping rates are quoted in U.S. funds and do not include applicable duty, customs charges or taxes, which are paid by the customer.

Ordering by phone: Prior to calling, please fill out the order form and have your credit card number and expiration date ready.

Ordering by mail or fax: Mail orders can be paid by credit card, check (drawn on U.S. bank only), or money order. Fax orders must be placed using a credit card. Sorry, no C.O.D's.

Returns made easy: No questions asked — no need to call us — simply follow the instructions on the back of your packing slip. We guarantee your satisfaction with all of our merchandise. You may return any item within 30 days of delivery for a full refund of the purchase price (minus delivery charges). If you receive a damaged or defective item, we will promptly send you a replacement or issue you a full refund. We cannot accept returns of custom embroidered products unless the product or embroidery is defective. All you need to do is return the damaged or defective product to: FrenchToast.com, Attn: Returns Dept., 229 Hollie Drive, Martinsville, VA 24112.

Exchanges: Simply follow the instructions on the back of the packing slip. Shipping charges apply to exchange orders. Exchanges may take 2-3 weeks to process. For faster service, return items for a credit and place a new order.

Customer Service: Please call Customer Service from Mon. through Sat. 8 am — 8 pm EST for questions on volume discounts, school sales, exchanges or refunds, complaint resolutions, billing inquiries and any other questions. Phone: 1-800-373-6248

Fax: 1-888-296-4966

E-mail: service@FrenchToast.com

Help other students benefit from your kid's outgrown uniforms!

Our uniforms hold up so well, they're often outgrown before they wear out. We suggest you donate these uniforms to a "uniform closet" at your school. These items will help less fortunate students to stay in step with dress code. For help starting a "uniform closet" at your school, call 1-888-55-SCHOOL.

Shop 24 hours / 7 days at www.FrenchToast.com

1-800-FRENCHTOAST (1-800-373-6248)